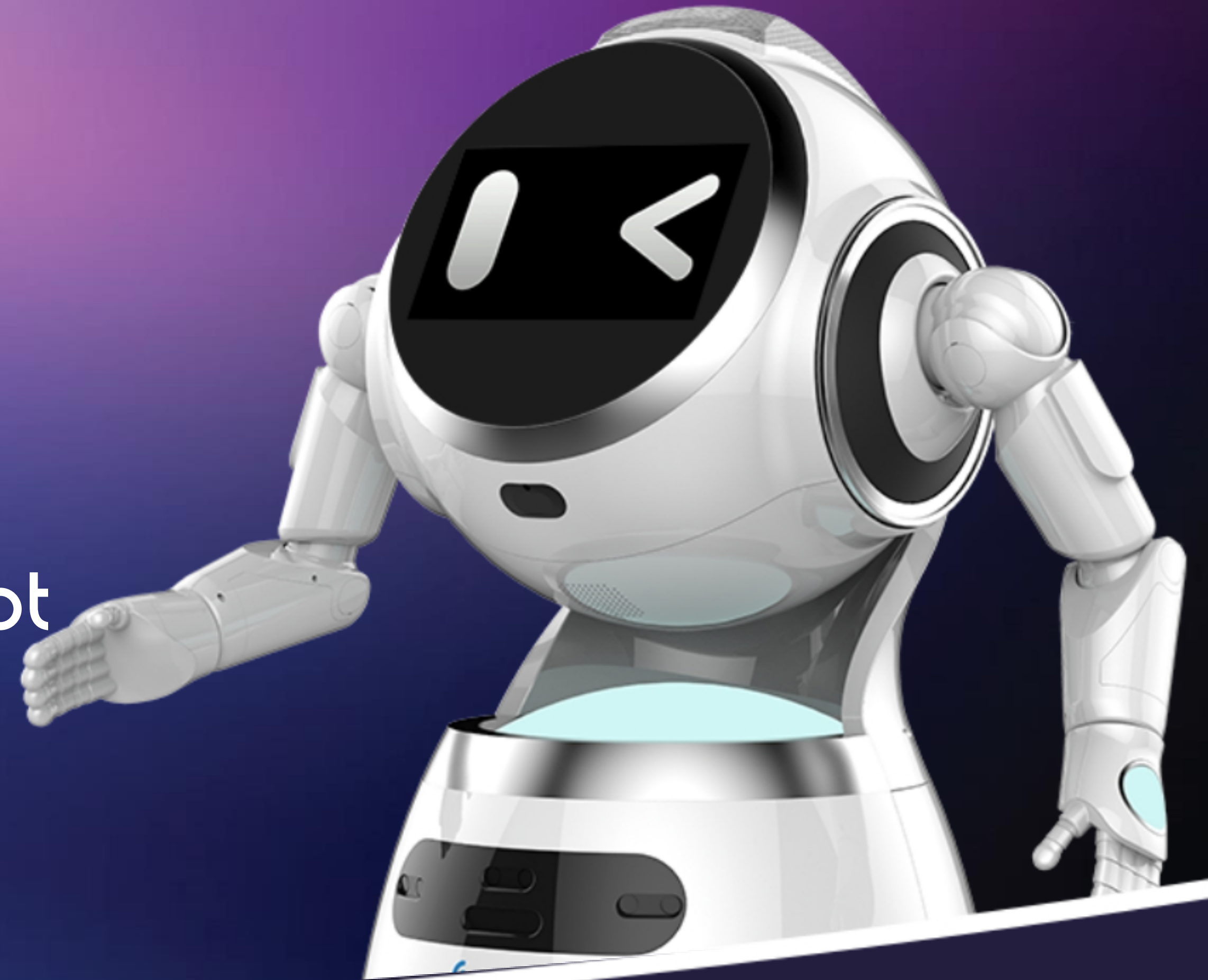


CRUZR

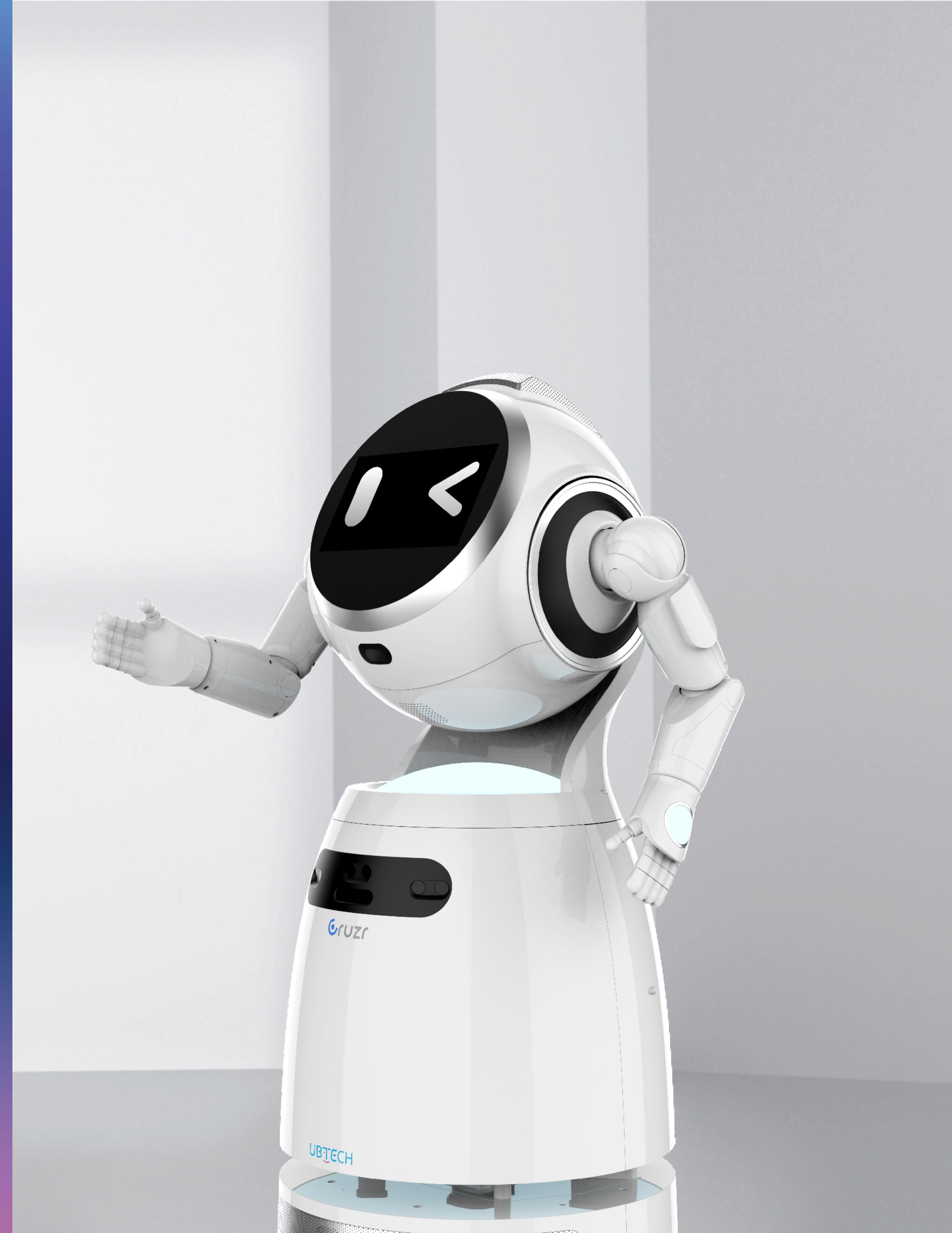
Cloud-based Intelligent  
Commercial Service Robot



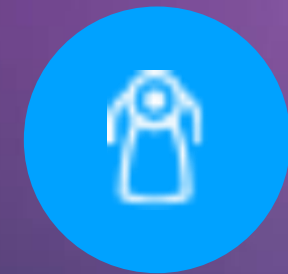


**Customized, Cloud-based,  
Intelligent Humanoid Service Robot  
New Era for intelligent robotic service**

- **Cloud-based Robotic OS**
  - **Open API**
  - **Provide industry-specific solutions**
- ✓ Dealing with repetitive tasks
  - ✓ Optimizing human resources
  - ✓ Reducing operational costs
  - ✓ Increasing working efficiency
  - ✓ Improving quality of service
  - ✓ Improving customer satisfaction
  - ✓ Improving cooperate brand image



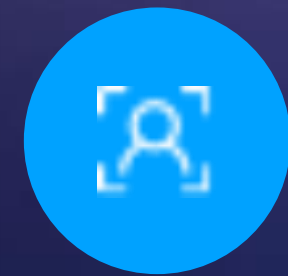
# Key Features



**Friendly Human-like  
Design**



**Flexible presentation  
Marketing upgrade**



**Face Detection**



**Human-machine interaction  
Integrated large language model**



**Stereoscopic navigation  
Real-time obstacle avoidance**



**Customized personalization  
Infinite applications**

# Friendly Human-like Design

- Humanoid Robot
- 15 Degrees of Freedom (DoFs) in total
- 12 DoFs on shoulders and arms
- 360° abrasion resistant and quiet wheels

- 
- ✓ Enhanced agility with greater affinity
  - ✓ Enhanced trust and security for smooth stability
  - ✓ Rich Body Language



# U-SLAM Navigation System

Precision navigation, real-time obstacle avoidance, 360-degree comprehensive road conditions

U-SLAM stands for UBTECH SLAM (Simultaneous Localization and Mapping), which uses real-time localization and map building to achieve comprehensive 3D navigation and obstacle avoidance.



**Real-time localization and map building**

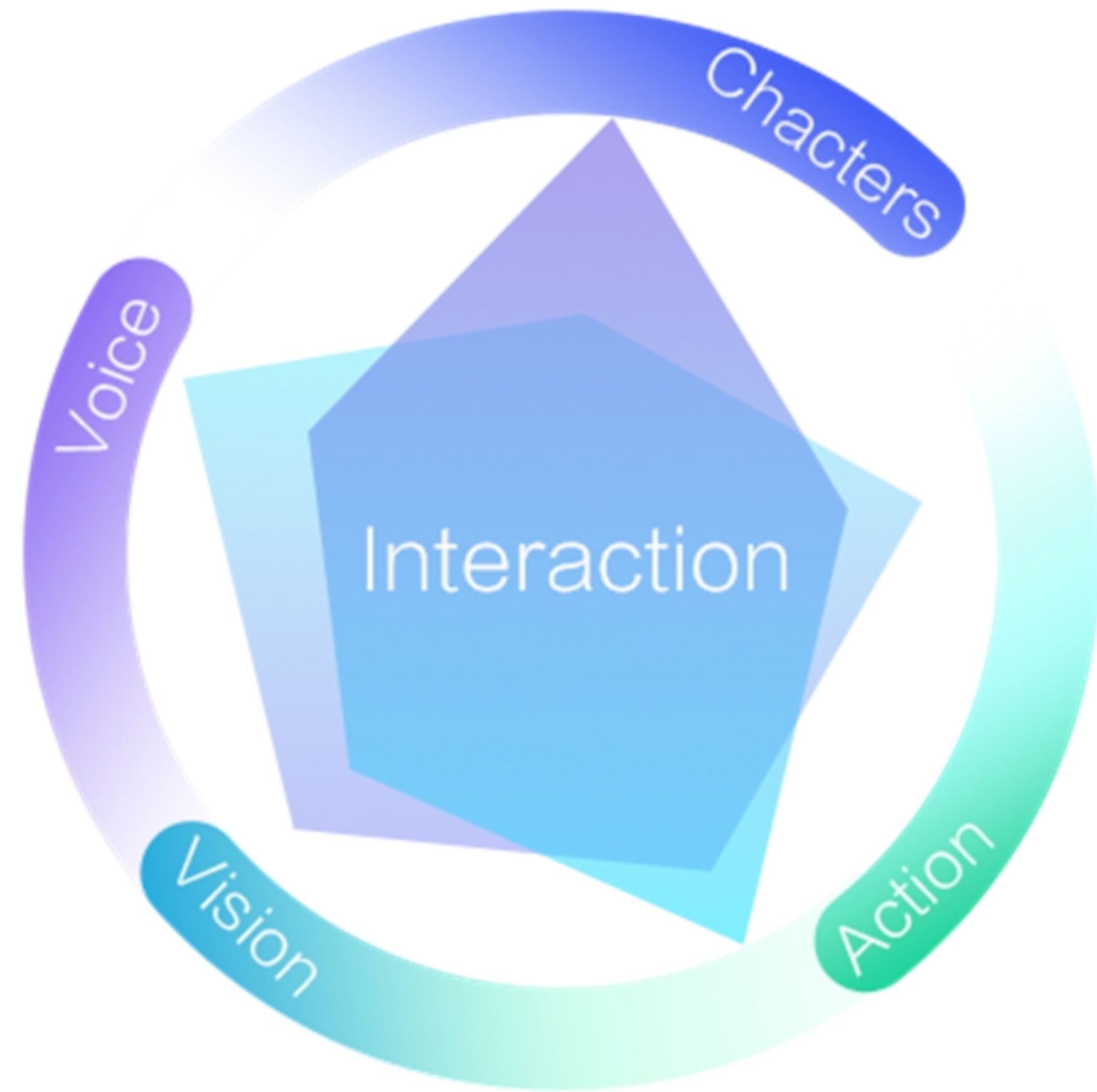


**Six major sensors collaborate for comprehensive 3D navigation and obstacle avoidance**

- 
- ✓ Adaptive to all road conditions
  - ✓ Arrive at any location with precision
  - ✓ An intuitive and customizable control experience



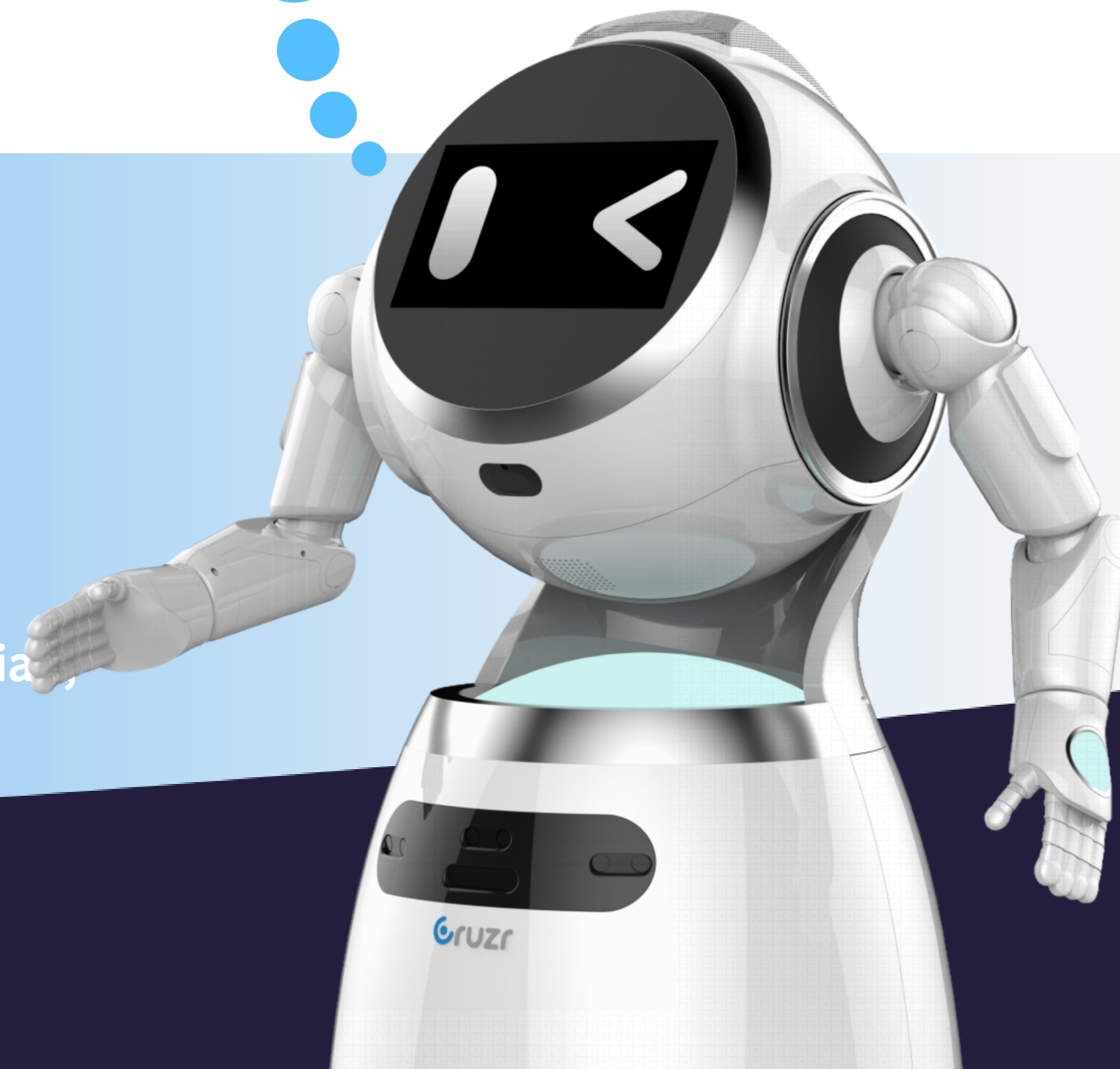
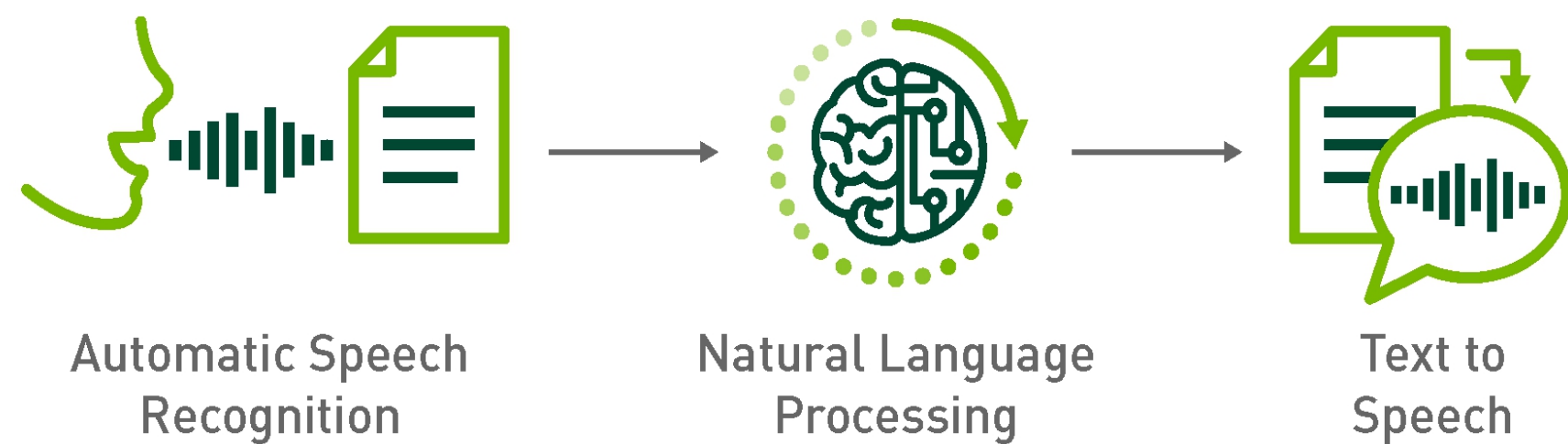
# Multi-modal Interaction



“Modality” means “sense” , Multi-modal interaction is an interaction with voice, action, text, expression and other modes of communication to fully simulate human communication.

- More expressive
- More humanlike
- More vivid

Upgraded with a new iteration and connected to a large model,  
making the machine's thinking and answers as smart and intelligent as humans !



- Language recognition is more **"Accurate"**
- Semantic understanding/reasoning ability is more **"Powerful"**
- The knowledge base customized questions and answers are more **"Intelligent"**
- Chat interaction is more **"Smart"**, supporting custom roles and skills;
- Supports **more languages**, including Chinese, English, Spanish, Portuguese, French, Italian, Korean, etc.

# Enhanced Safe-Assurance with E-skin

## Auto power off protection on arms

- High Sensitivity
- Fast Response
- Soft
- Large Detecting Area

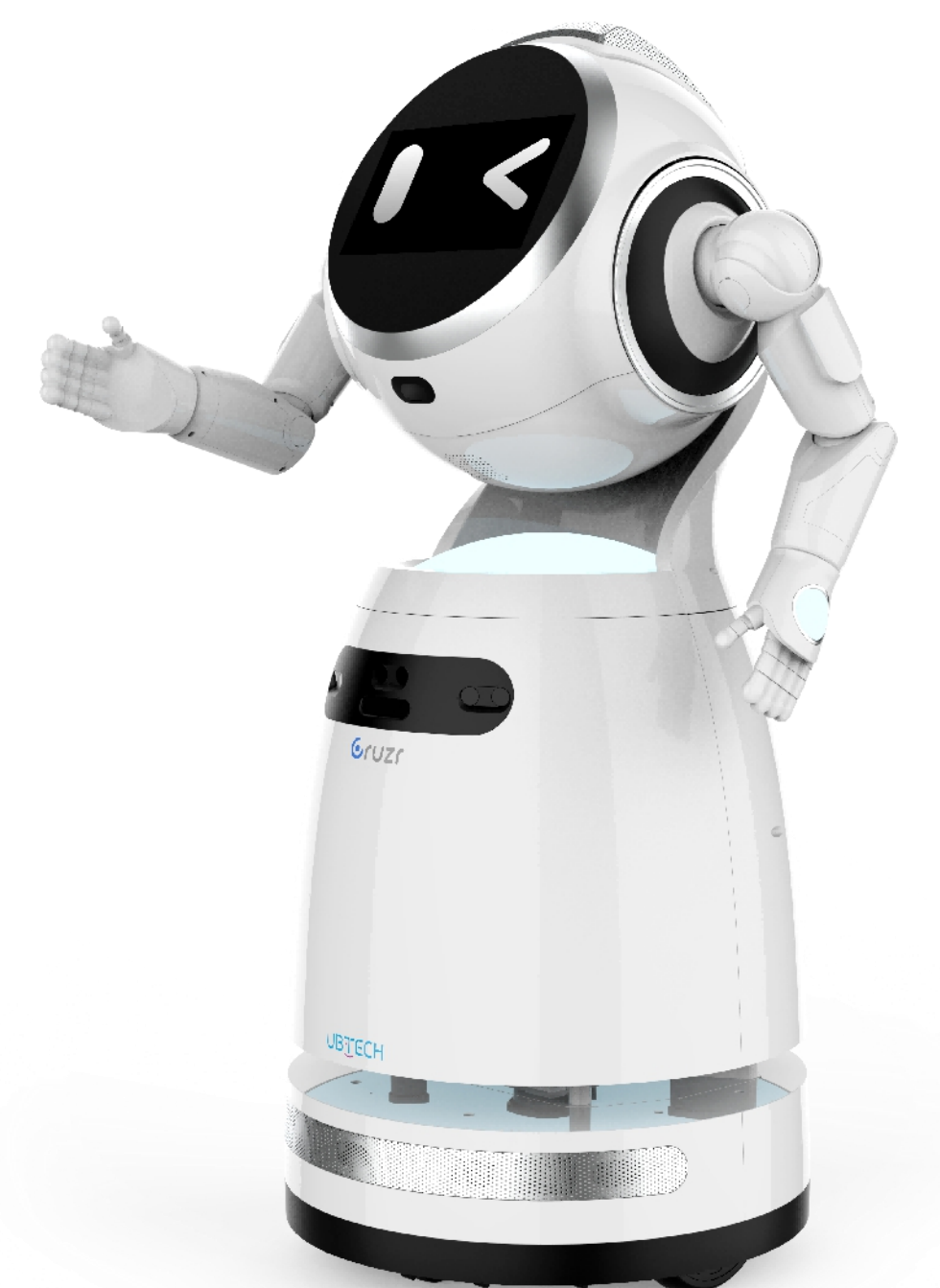
When any obstacles detected, the arms will stop moving which could avoid unexpected harm to people around and self-damaging.



High Sensitivity



Fast Response



Dual Protection

# Automatic Recharging Long-lasting Battery Life

- Automatic recharging based on infrared positioning system
- 8 hrs working time (24 hrs standby)
- High precision recharging location, low power consumption, high stability. The charging interface is more concealed and safer
- Multiple flexible charging options (manual charging, scheduled charging, automatic charging)

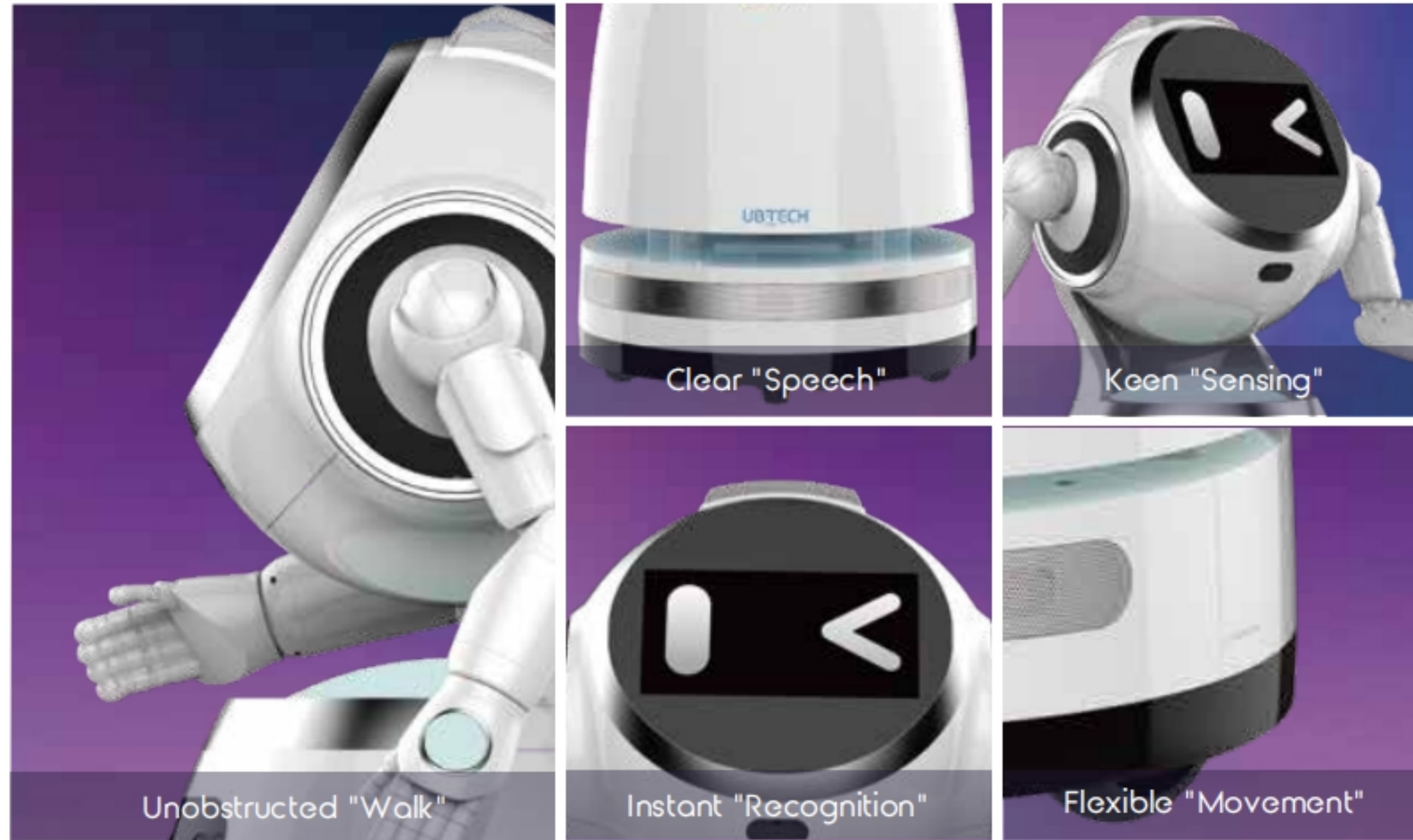


# Open API for personalized customization services

- Provide SDK packages and open API interfaces.
- Refer to the demo code and perform secondary development based on the application scenario.
- One-stop solution integration .



# Parameters



## Product Parameter

Dimension: 1240 mm x 650 mm X 537 mm (H x W x D)	Weight: About 45 KG	Speakers: 85dB
Screen: 11.6-Inch TFT touch screen	Resolution: 1920*1080	Sensors: RGBD depth camera x 1
Maximum Obstacle Climbing: 3 cm	Maximum Step Climbing: 2 cm	TOF infrared sensor x 1
Maximum Slope Climbing: 6.5°	Network: Wi-Fi 2.4G&5G	Closed ultrasound sensor x 3
Speed: Normal speed: 0.3/0.5/0.7 m/s (maximum 1m/s)	Electronic Skin: 3*2 (arms, 3 pieces/arm)	Open ultrasound sensor x 5
LIDAR: 360° ,25m (radius)		Magnetic sensor x 1
Supported languages: Chinese, English, Spanish, Portuguese, Portuguese(Brazilian), French, Italian Korean		Chassis infrared sensors x 6

## Core Components



# Application Scenarios



Garage



Medical  
Treatment



Traffic



Party  
Building



Retail



Government  
Affairs



Exhibition



Finance



Education



Hotel

# Full Scene Application Cases



# AI + Automotive Application Cases

BYD



腾势



When Cruzr sees a customer, it can play an active welcome function to improve the service temperature and technological level of the car store. It can also lead the customer to the designated location of different models of cars according to the customer's needs.



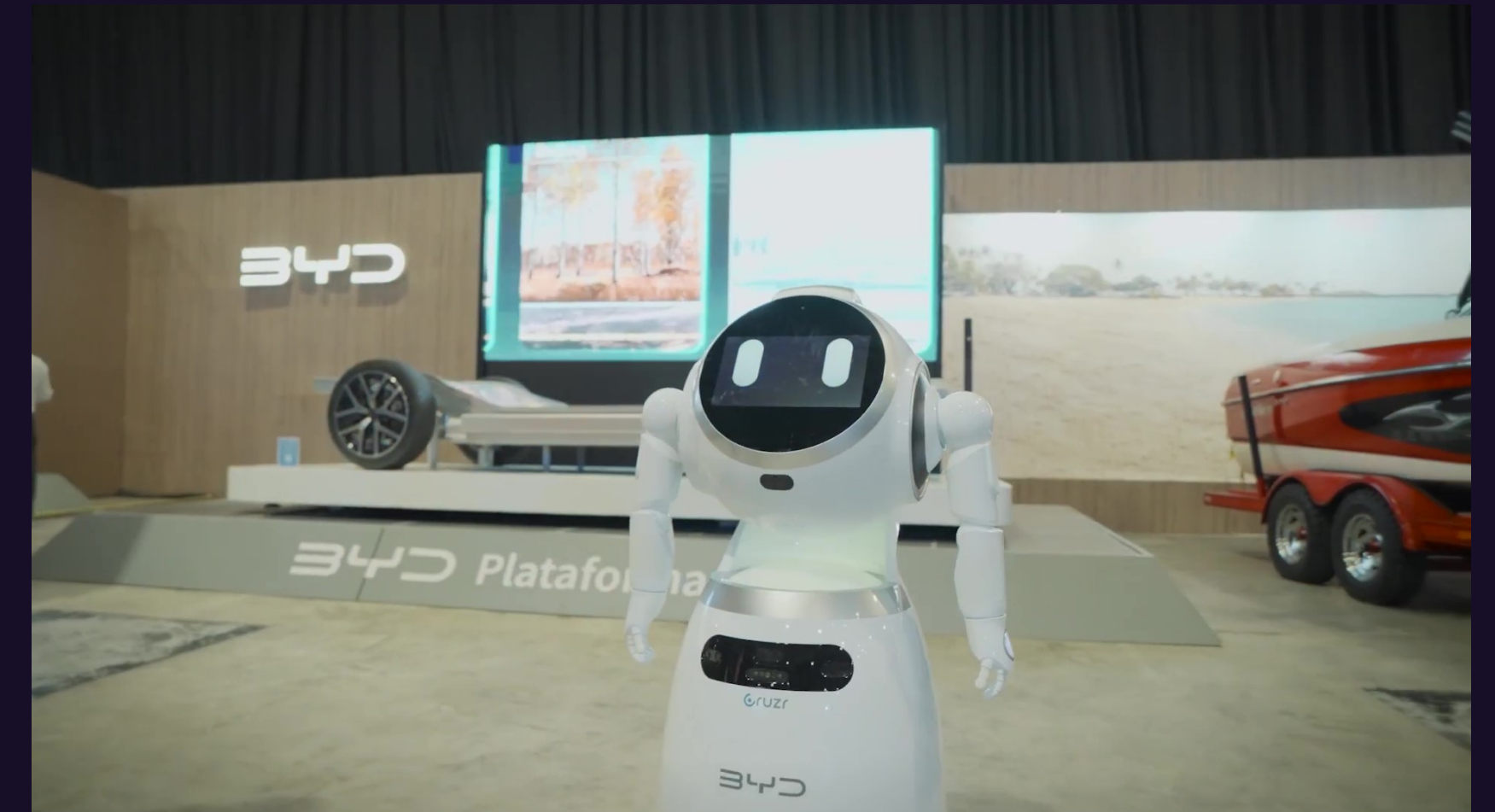
After training Cruzr with brand knowledge to become a professional 4S store shopping guide, Cruzr can provide car knowledge Q&A services when customers have questions about car parameters or prices.



During idle periods, Cruzr can engage in entertaining interactions with store customers to increase their dwell time in the store, making it particularly appealing to children accompanying visiting customers.



Cruzr can achieve fully automated, multi-point car explanations, thereby reducing the workload of store personnel and transforming into a "gold-medal presenter," enhancing customer perception of robot sales.



# AI+ Retail Application Cases



Entertainment functions like singing and dancing can effectively attract customers.

“Easyhome Class” function:  
enhance customers understanding of the industry and trigger related consumption;  
“Easyhome Challenge” game function:  
increase customer retention time.



Share responsibility of part of the inquiry work to relieve the lack of manpower during peak period of business.



# AI+ Retail Application Cases

Jaymart 

No. 1 Mobile Retailer in Thailand



Ubtech and Jaymart jointly signed the Cruzr entry contract. Thai Minister of Industry Udama attended and witnessed the signing ceremony.



Nearly 1,000 Cruzr robots will be stationed in Jaymart, it is of great significance for transformation of the traditional retail mode.



Utilizing the innovative technologies of AI robots to further accelerate the process of smart cities, thereby helping the development of "Thai Industry 4.0"



# AI+ Restaurant Application Cases



When Cruzr sees customers, the active welcome function brings them a homecoming experience.



Cruzr takes customers to the reserved table and recommends related dishes.



Customers can order dishes and pay through Cruzr, and score the dishes and restaurants.



Customers can know the background of brand and dishes through Cruzr. After dinner, Cruzr can also issue coupons to attract customers to come back next time.



# AI+ Service Hall Application Cases



Customers could interact with Cruzr through voice, vision, text, and quickly find commodity information and location through Cruzr.



Actively provide product promotional information, enhance customers experience, and increase the purchase rate



Provide membership registration service and answer customer inquiries



Collection and analysis of operational data, extracting value information from massive data and establishing exclusive database



# AI+ Service Hall Application Cases



Australia' s Largest Operator    Telefonica Brazilian Subnet vivo



As the first robotic salesman in the flagship service hall, it provides help and guidance to customers, as well as inquiry and reception services.



In Telstra Intelligent Cafe, Cruzr serves as a robotic waiter, selling coffee to customers, improving sales volume and attracting attention



Providing inquiry service and simple business processing, etc.



# AI+ Airport Application Cases



昆明长水国际机场  
CHANG SHUI INTERNATIONAL AIRPORT



长春龙嘉国际机场  
ChangChun Longjia International Airport



厦|门|航|空 XIAMEAIR



Cloud Intelligent Q&A System with Deep Customization, Richness and Learning Extension



If you encounter a question-and-answer blind area or have urgent affairs to deal with, you can contact the video customer service center by Cruzr.



The only one in China to realize autonomous localization and navigation of robots in large scenes



Cloud service based flight information integration, which is accurate, efficient and real-time, guide customers to self-check-in machine



# AI+ Government Affairs Application Cases



When visitors arrived, Cruzr could automatically greet guests, to say customized greeting words, also to play pictures, video and other promotional information at the same time.



Interactive modes of voice and touch screen, enable Cruzr to share part of the inquiry work and relieve the lack of manpower situation.



Cruzr provides guided tours function to guide visitors along established routes or to designated locations.



# AI+ Party Building Application Cases

## 人民日报 数字传播



Read and listen to the "People's Daily" through Cruzr, and view the party building work on a certain day through the "Party Building Calendar" function.



Through Cruzr, we can learn the video course of Party Building, consult "Study Hard" speeches and articles, consult ideological policies and party history materials.



Hundreds of Party Constitution questions and answers on Cruzr Cloud, party members can consult party affairs knowledge through Cruzr



Cruzr has built-in interactive functions such as "the strongest brain in Party building" and "taking pictures with me", and built-in red song and dance to enhance interaction with Party members and the masses.



# AI+ Exhibition Application Cases

MOMA 艺术博物馆  
SHANGHAI 上海

广东省博物馆  
GUANGDONG MUSEUM



CruZR Robot can precisely guide visitors to any exhibit through the U-SLAM Stereo Navigation Obstacle Avoidance System.



Storing thousands of exhibit information and historical stories in the brain, together with massive and real-time updated cloud platform knowledge base, can answer the related questions about exhibits.



The 13 million HD cameras can monitor the venues in real time, report the matters needing attention in mobile broadcasting, and help managers understand the situation of each area in the exhibition hall in real time.



# AI+ Education Application Cases

## People's Primary School of Chongqing Liangjiang New District



Welcome teachers, students and visitors in exhibition halls, characteristic classrooms and activity rooms



Acting as a lecturer in characteristic classrooms and activity rooms, introducing the application situation to visitors



Promote the characteristic classroom knowledge, expand extracurricular knowledge and assist teachers in classroom interaction



Information introduction with video and pictures, more convenient for visitors to understand, and easier to get attention



# AI+ Hotel Application Cases



Accor Group of Hotels



Brazil Pullman Smart Hotel



Cruzr enters the high-end hotel smart service, provides information consultation, check-in and check-out services for guests



Provide customers with other intimate services, such as introduction of surrounding attractions, food recommendation, traffic status inquiries, etc.



As the front desk of the hotel, Cruzr is using technology to manage big data, reduce hotel operating costs and improve management efficiency.



# AI+Tax Service Application Cases



国家税务总局深圳市税务局

Shenzhen Tax Service, State Taxation Administration

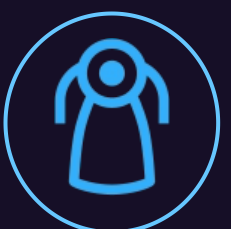
## Nanshan, Tax Service Administration



CruZR Robot can introduce the functions area and settings of Nanshan Tax Service Administration for citizens and enterprises to any exhibit through the U-SLAM Stereo Navigation Obstacle Avoidance System.



Provide tax consultation and show distinctly different Tax processes for citizens and enterprises.



Patrol broadcasting new tax regulations, publicity video, national tax policy, etc., which becomes the brightest window of the administration.



# AI + Medical Application Cases



宁夏医科大学总医院  
General Hospital of Ningxia Medical University



Cruzr provides hospital information , healthy nutritional knowledge and medical insurance policy advisory.



Provide illness primary diagnosis, give treatment sections suggestion, assist self registration, medical insurance payment.



Provide hospital section category introduction, including section and doctor' s brief introduction.



Demonstrate clearly positions and routes of various sections and facilities of hospital through the U-SLAM Stereo Navigation Obstacle Avoidance System.



# AI + Public Security Application Cases



Cruzr integrates vigilante commanding and dispatching system, communicates with 10,000+ vigilantes instantaneously, and makes a real-time report of vigilantes' team circumstance to leaders.



In the disaster and public emergency, Cruzr can participate in the mass prevision to do mass response. During 2020 epidemic, be a positive member, which show us science techniques assist epidemic prevention work in the public security.



Provides the masses legal advice, professional knowledge Q&A related police service, and other kinds of advices in the police station, relieves the police stress, optimizes the police deployment in the basic sorts.



Assembles services information on various domains including point system, Entry-exit, drug control, legislation etc., and make a powerful legal knowledge base.



The Vigilante “Huang Tiantian”

# AI + Bank Application Cases



Cruzr Robot can precisely guide customers to business areas through the U-SLAM Stereo Navigation Obstacle Avoidance System.



Answers customers' questions in business transaction, and assists bank make business promotion; if the robot can handle some issue, which the video customer service will solve.



Patrolling broadcasting attentions and promotions of bank, and real-time monitoring bank and send the real-time circumstance to administrators.



Bank lobby assistance, help lobby manager to handle business transactions, like scanning QR code for a new card, make an appointment withdrawal, etc.



# Brand Influence



指导单位：国务院办公厅电子政务办、国家行政学院电子政务研究中心

主办单位：深圳市人民政府

承办单位：深圳市政务服务数据管理局

协办单位：深圳智慧城市集团、香港中文大学（深圳）、深工协

中国·深圳

2019年11月30日-12月1日



**In December 2019, Cruzr robot appeared at advanced seminar of Shenzhen Construction “Digital government”**

**In Dec 1, Shenzhen Government hosted an advanced seminar on building "digital government" in the demonstration area of socialism with Chinese characteristics, under the guidance of the E-government Office of the general office of the State Council and the e-government research center of the State Administration College. AS unique robot enterprise, UBTECH was invited to attend and appear in Shenzhen smart city and "digital government" achievement exhibition.**

## 习近平总书记 广东工作的殷殷嘱托

展中国特色社会主义的排头兵、深化改革开放的先行区、为率先全面建成小康社会、率先基本实现社会主义现代化而奋斗。

改革中走在全国前列，坚持两手抓、两手都要硬，精神文明建设两份好的答卷。

领导、坚持中国特色社会主义、坚持新发展理念、坚持供给侧结构性改革、实施创新驱动发展战略、构建支撑，努力在全面建成小康社会、加快建设社会主义现代化走在前列。

改革开放成就的重要窗口，也是国际社会观察我国改革开放推动经济高质量发展体制机制、建设现代化经济体系、营造共建共治共享社会治理格局上走在全国

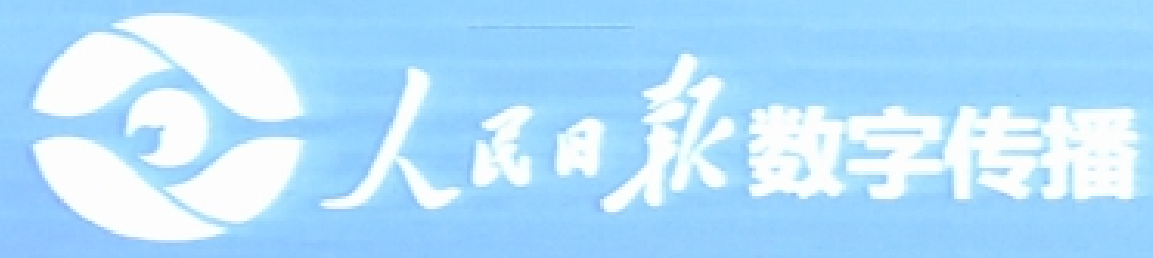
推动高质量发展，提高发展平衡性和协调性。

## 大美广东



In June 2019, Cruzr Robot appeared at “Guangdong Achievement Exhibition for the 70th Anniversary of the Founding of China”

Ma Xingrui, Deputy Secretary of the CPC Guangdong Provincial Committee and governor of the province, mentioned UBTECH on the conference. As a high-tech representative of Guangdong Province, Cruzr Robot introduced the achievements of Guangdong's development to Chinese and foreign media.



人民日报数字传播

优必选

UBTECH

# 战略合作协议签约仪式

人民日报数字传播 · 优必选科技



徐涛



谭旻

In May 2019, UBTECH reached strategic cooperation with PeopleDigital Co., Ltd.

PeopleDigital with UBTECH together launched the party building robot Cruzr, and authorized UBTECH to be the only intelligent party building robot brand of PeopleDigital, working together to enable AI to Party building, media, education and other fields.



**In January 2018, 2150 Cruzr robots launched at the Easyhome at hundreds of cities and thousands of stores"**

**The first large-scale offline retailing launch of AI robots in human history**

# Television News



- ① SHENZHEN SATELLITE TV  
<30 Minutes at Noon>
- ② YUN NAN SATELLITE TV  
<YUN NAN XINWEN LIANBO>
- ③ CCTV <XINWEN LIANBO>
- ④ CCTV <Future Architect>



# Brand Cooperation



- ① Alibaba Koubei Smart Dining Car
- ② Tencent Global Partnership Conference
- ③ P&G ARIEL New Product Appreciation
- ④ The ALLEY \* UBTECH Flash Mob store



# Exhibition Summit



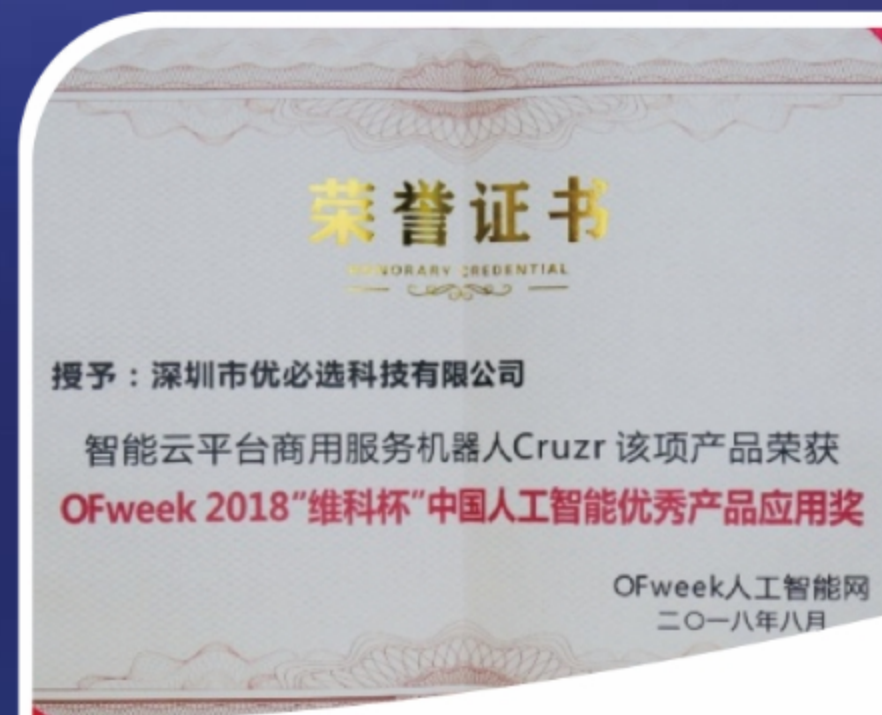
- ① CES 2019
- ② IFA 2018
- ③ 2018 WRC
- ④ Global AI+ New Business Summit

# Achievement of Honor

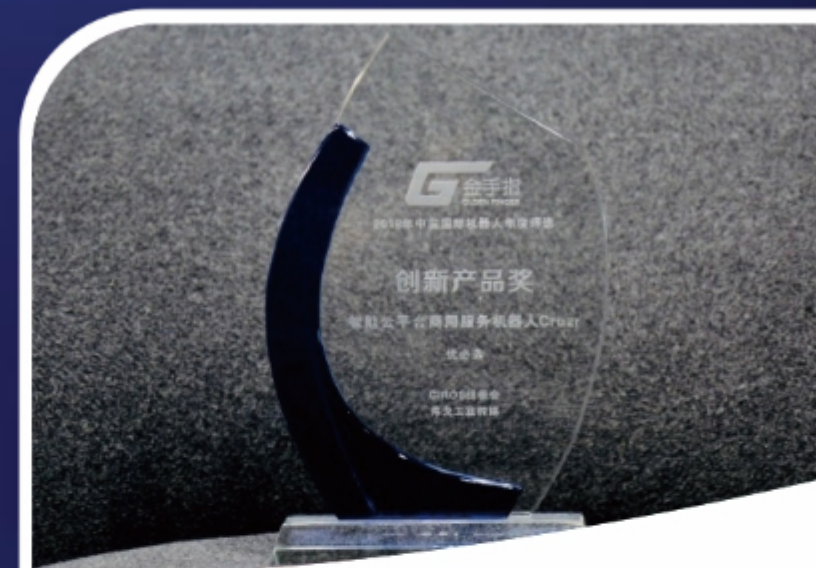


36 kr "TOP List of Retail Innovation 2018"

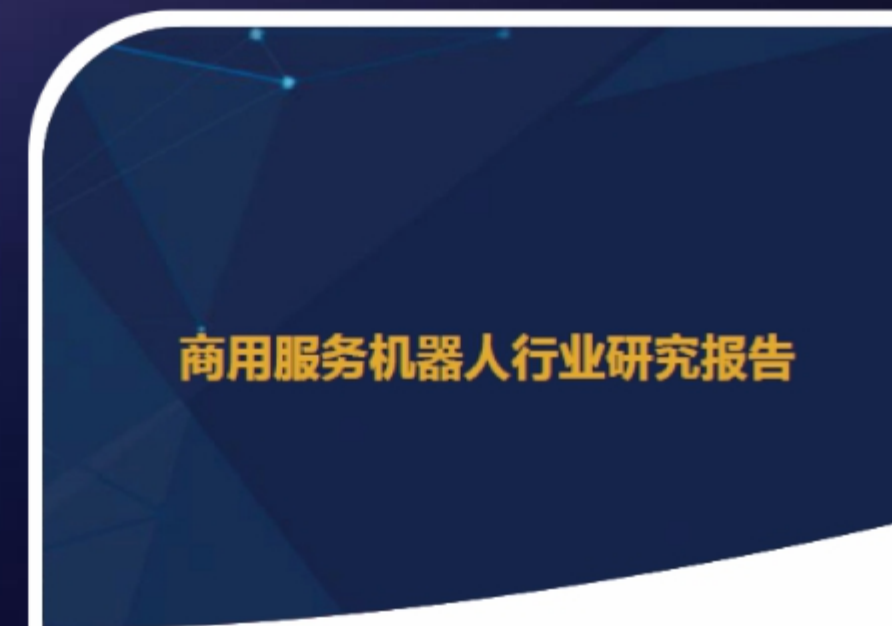
Retail Innovation Product Award - Cruzr



Excellent AI Products in China Application Award - Cruzr



"Golden Finger" Innovative Product Award-Cruzr



36Kr Business Service Robot Industry White Paper Selection Case-Cruzr



EqualOcean AI Business Landing White Paper Selected Cases - Cruzr

## UBTECH ROBOTICS CORP LTD.

Website: [www.commercial.ubtrobot.com](http://www.commercial.ubtrobot.com)

Email: [commercial.marketing@ubtrobot.com](mailto:commercial.marketing@ubtrobot.com)

Service Line: 400-6666-700

Address: 8th, 22th Floors, Block C1, Nanshan IT Park, No. 1001 Xueyuan Road, Nanshan District, Shenzhen City, China Official

## Trademark statement

 ,  , Other trademarks, product names, service names and company names appearing in this brochure and in the products described in this brochure are the property of their respective owners.

## Disclaimer

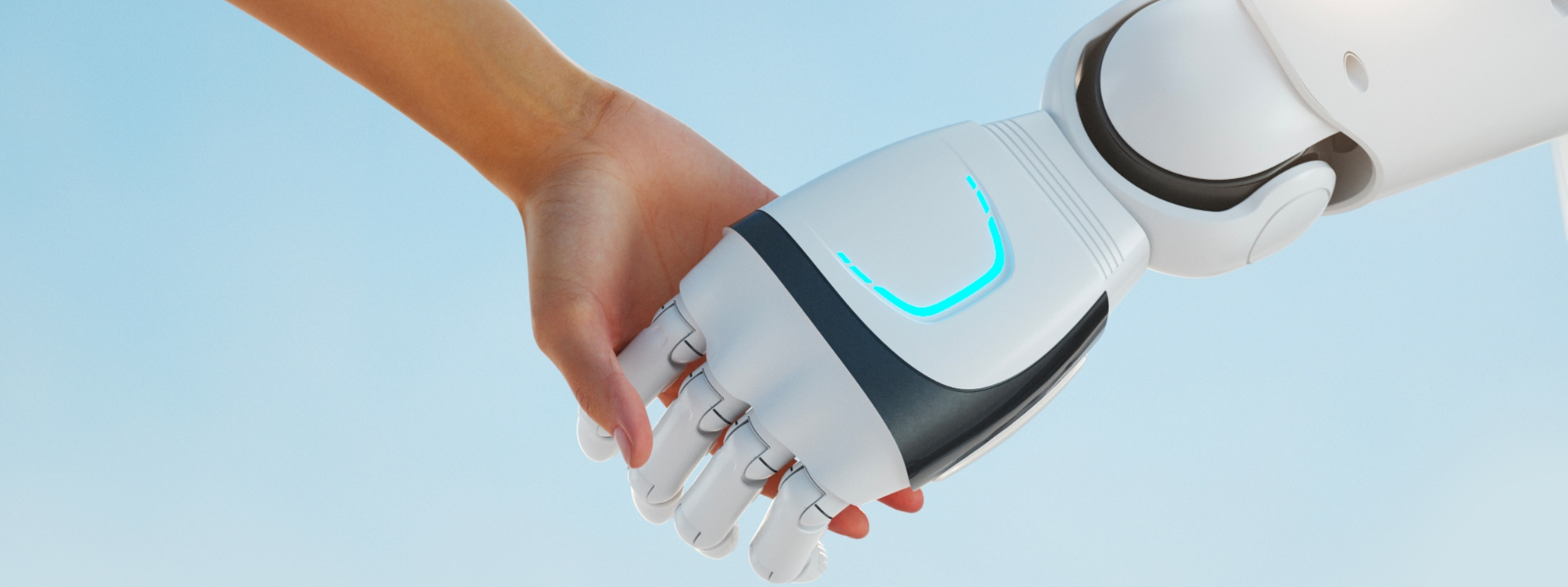
\*Unless otherwise specified, the data shown on these pages are proprietary to our company and are provided for reference only. Actual data may vary due to factors such as the usage environment, condition of the device, software version, etc. Please rely on the actual data provided.

\*All contents such as graphics, videos, and photographed products are for reference only, and actual products may change or differ.

\*Please refer to the final contract or purchase, our company reserves the right to interpret within the scope permitted by law.

## Copyright

No part or all of the contents of this document may be excerpted or reproduced by any entity or individual without the written consent of UBTECH, and may not be transmitted in any form.



Dream with Robots